

Christmas Bird Card

Stamp Sets: Teeny Tiny Wishes #128748 (wood) #127802 (clear)

Inks: Mossy Meadow Classic Stampin' Pad #133645
Cherry Cobbler Classic Stampin' Pad #126966

Card Stock: Very Vanilla #101650
Cherry Cobbler #119685
Mossy Meadow #133676
Gold Foil Sheets #132622
Gold Fancy Foil Designer Vellum #133363

Accessories: Bird Builder Punch #117191
Gold Metallic Baker's Twine #132975
Stamping Sponges #101610
Very Vanilla Medium Envelopes #107300
Stampin' Trimmer #126889

Glue Dots #103683
Dimensionals #104430
SNAIL Adhesive #104332
Bone Folder #102300

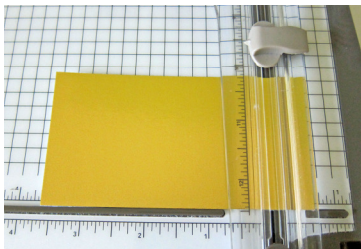


Cutting Dimensions:

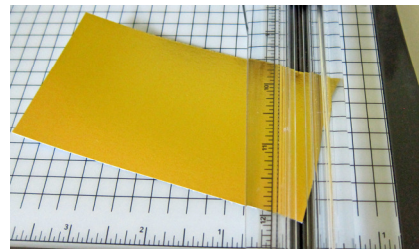
Very Vanilla Card Stock	---	4 1/4" x 11" score @ 5 1/2" 4" x 5 1/8" 3/8" x 2 1/8" (tag)
Cherry Cobbler Card Stock	---	2 1/2" x 2 3/8"
Mossy Meadow Card Stock	---	1" x 2 3/8"
Gold Foil	---	4 1/4" x 2 1/4"
Vellum	---	4 1/2" x 1 7/8"
Baker's Twine	---	20"

Assembly Instructions: (It's helpful to read through all instructions before beginning.)

1. Use the Stampin' Trimmer to cut bottom edge of Gold Foil diagonally. Use the scoring blade to place a small score mark 5/8" from the right edge at the bottom of the strip. Then align both the scored notch and the opposite corner of the bottom of the Gold strip in the cutting track (see images below). Cut diagonally.



Make a small score mark at 5/8".



Position score mark & corner in cutting track.

2. Using the same method, diagonally cut the bottom edge of the Vellum strip from the opposite side, placing the score mark at 3/8"
3. Adhere the Vellum to the Foil with Glue Dots to create the banner. You can hide them behind the Gold Stripes.
4. Wrap the Baker's Twine around the banner twice and tie into a bow. Trim ends.
5. Adhere Very Vanilla Card Stock to the card base with Dimensionals. Adhere the gold banner to the the Very Vanilla layer with SNAIL Adhesive. May need to put a couple Glue Dots at the top edge above the Baker's Twine to keep it secure.

6. Punch bird from Cherry Cobbler Card Stock. Sponge edges with Cherry Cobbler ink. Adhere the wing to the bird with a Glue Dot.
7. Punch branch from Mossy Meadow Card Stock. Sponge edges with Mossy Meadow ink. Trim stem and adhere to the back side of the bird with a Glue Dot.
8. Stamp the sentiment onto tag in Mossy Meadow ink. Trim the right side of the tag diagonally. Use the Bone Folder to curl the tag a little. Place half a Dimensional on the angled end of the tag and a Glue Dot on the opposite end. Adhere over the banner. Adhere the bird over the tag with a Dimensional.